



**Corporation for Findlay Market
Operations Center**

Findlay Market's Community Impact

For 173 years, Findlay Market has served the OTR neighborhood and the Cincinnati community by providing equitable access to fresh food and empowering diverse small businesses in order to steward a vibrant public market for current and future generations.

2021-2023 Economic Impact: **\$370MM**

2024 Market Stats

\$88k in SNAP benefits & Produce Perks distributed

21k lbs fresh produce delivered through
Product Prescription Program

40k lbs food waste diverted from landfills

40k lbs recyclable waste diverted from landfills

300k lbs cardboard waste diverted from landfills

65 full-time merchants

1 100 jobs created or supported

\$9MM taxes generated in CFFM and vendor operations

Findlay Kitchen Stats

280+ businesses have utilized the space

90% of those being women, BIPOC or immigrant-owned

Outdoor Market

62 women owned business

20 black-owned businesses

10 Latinx-owned businesses

5 LGTBQIA+ owned businesses

5 AAPI-owned businesses

3 immigrant-owned businesses

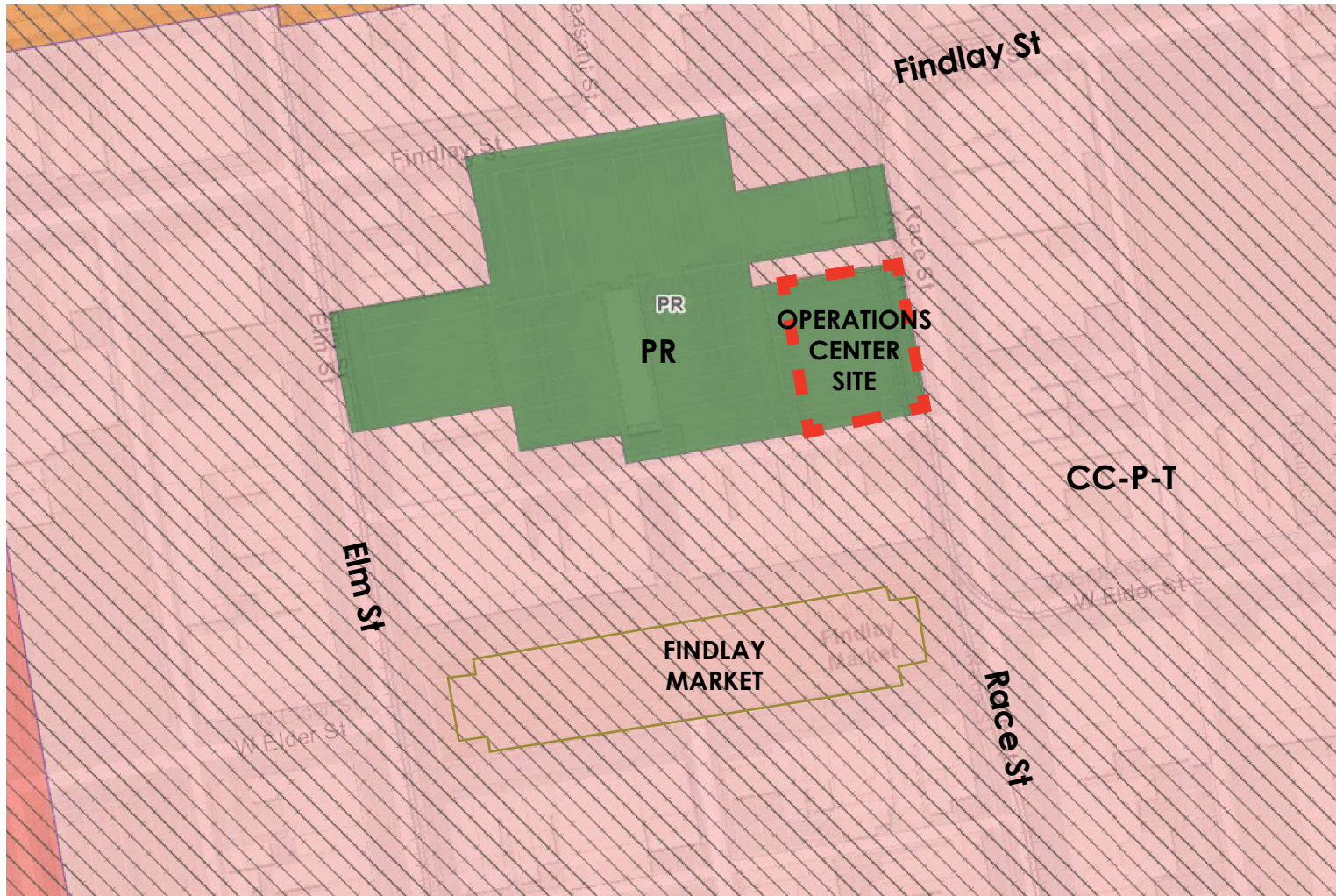
Annual Activities

100+ Free music performances

125+ Tours

20+ Free sampling events

Zoning Map



Intent

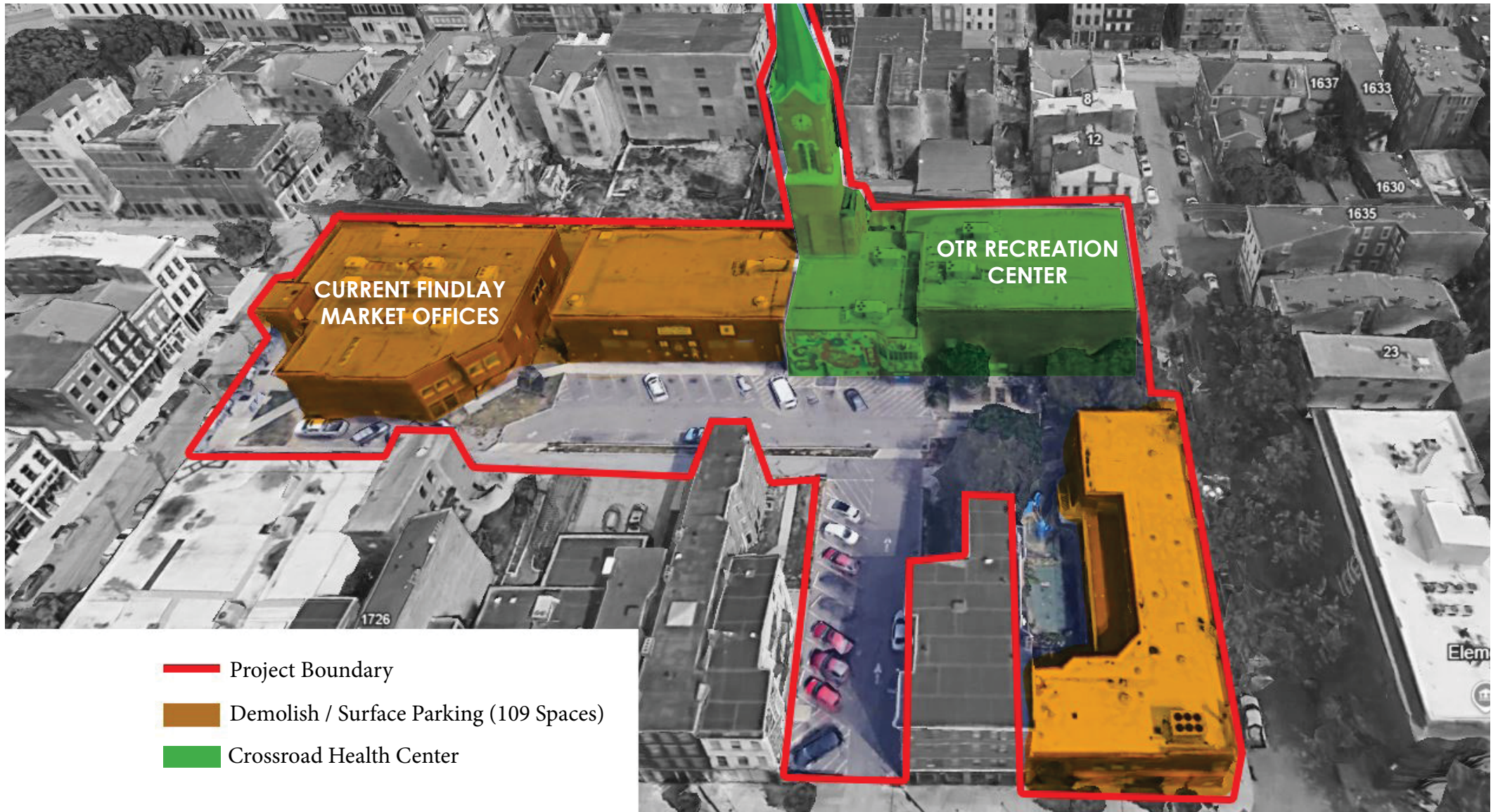
To provide information on the upcoming Findlay Market Operations Center Project.

Corporation for Findlay Market is seeking a letter of support from OTRCC for:

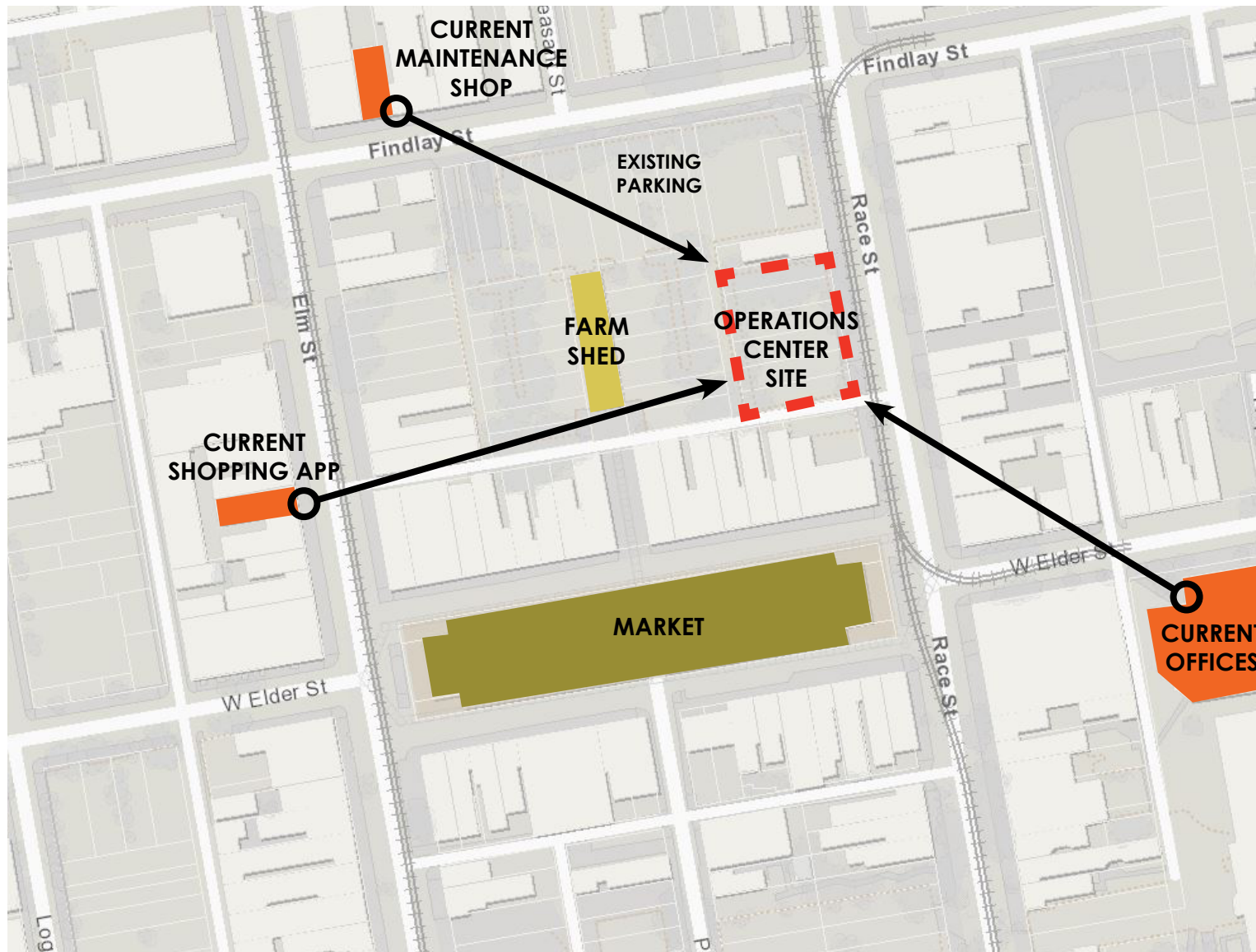
- a)** the approval of site control (sale or lease) of City-owned property to The Corporation for Findlay Market and
- b)** the zone change of (6) parcels from PR Park & Recreation to CC-P-T Commercial Community-Pedestrian-Transportation

OTRCC voted in support during their June 23rd meeting.

Current Nearby Development Plan



Project Site



Project Goals

Consolidate CFFM operations

Support Merchant needs
-cooler & dry storage
-mother's room
-event & meeting space

Ability to host events
-Merchant meetings
-Findlay Launch
-Market programs

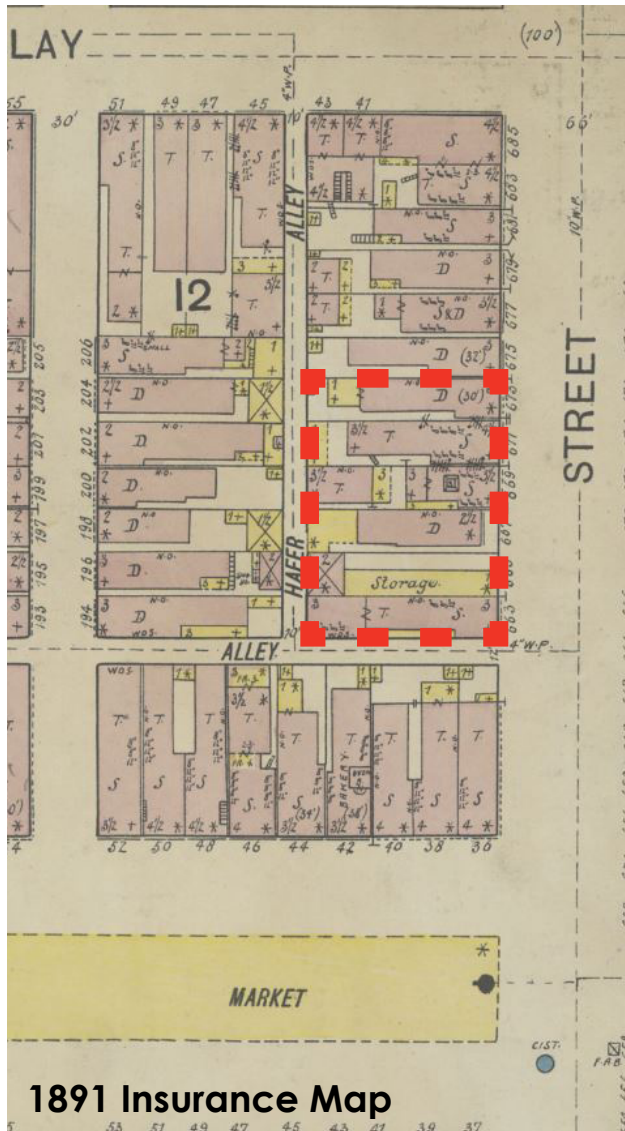
Community Benefits

Infill density along Race St.
where historic buildings once stood

Highlight history of the market
along the storefront

Better use of site

Historic Map



1891 Insurance Map

Existing Use



Existing Site Functions

- public recycling bin
- cardboard recycling
- waste dumpsters
- compost bins
- storage containers
- parking

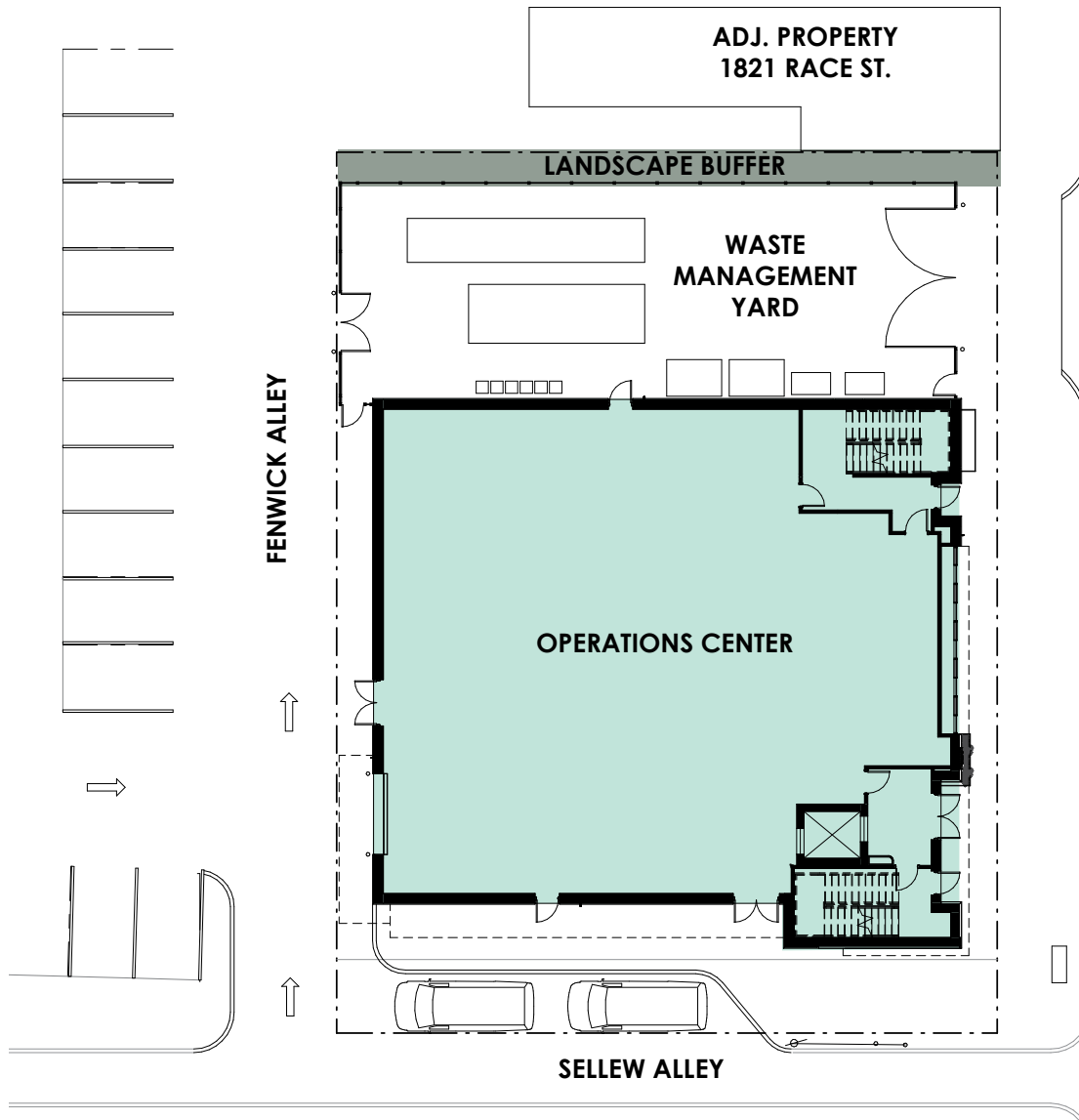
Site Functions to Remain

- public recycling bin
- cardboard recycling
- waste dumpsters
- compost bins

Operations Center Building Functions

- Maintenance & Facilities Shop
- Merchant Cool/Dry Storage
- Merchant Training Space
- Vendor Office Space
- Findlay Learn Class Space
- Community Group Space
- Event Room
- Offices / Storage
- Events & Maint. Storage
- Shopping App Distribution

Site Plan & Building Overview



Building Overview

4-story
21,000 GSF
LEED Certified Goal

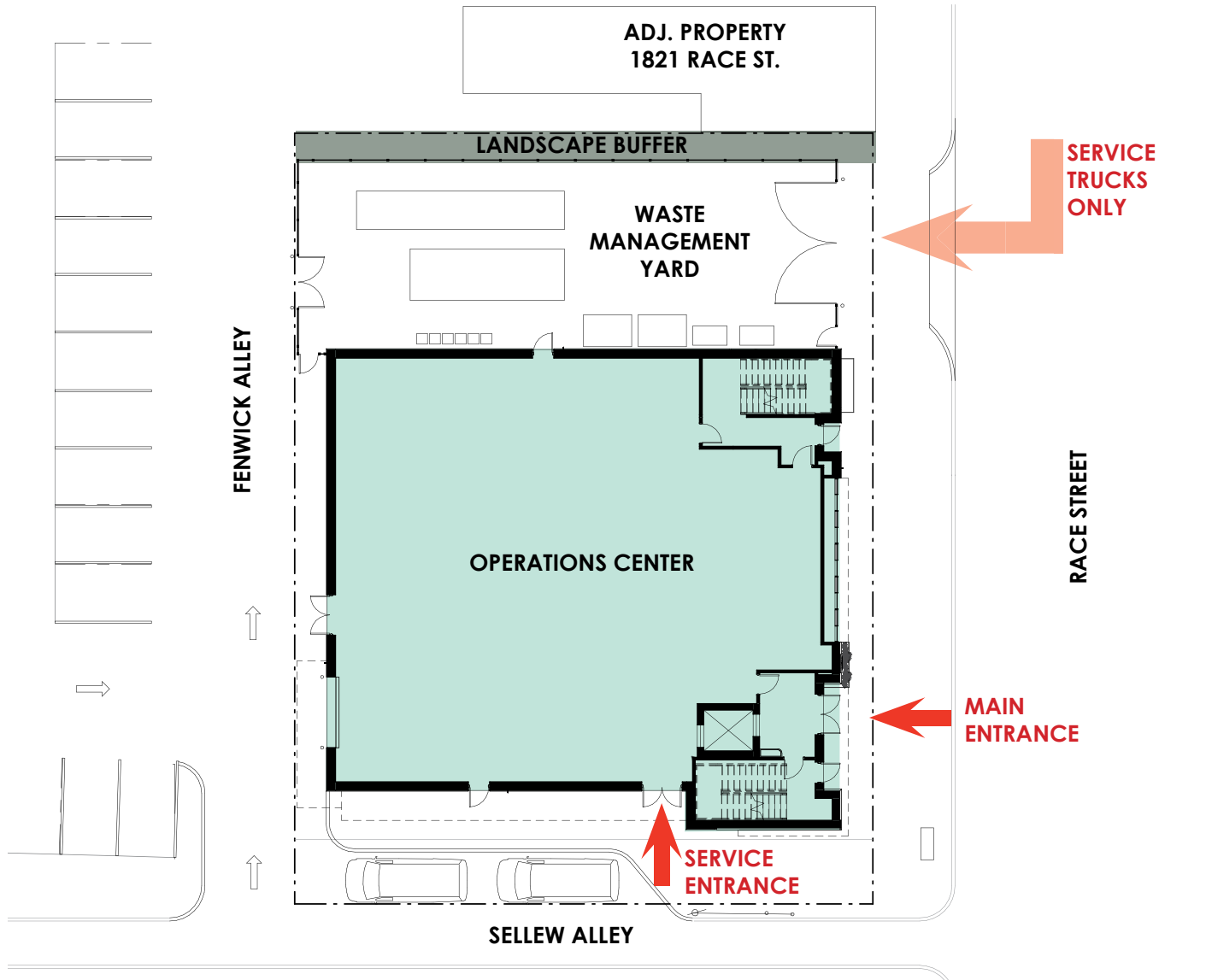
Level 01: 5,637 SF

Level 02: 5,433 SF

Level 03: 5,437 SF

Level 04: 4,489 SF

Site Circulation



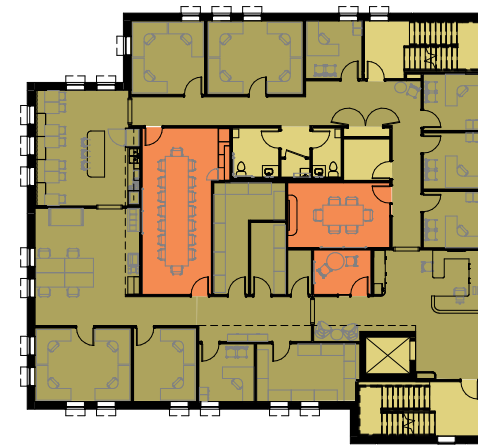
Floor Plans



LEVEL 1



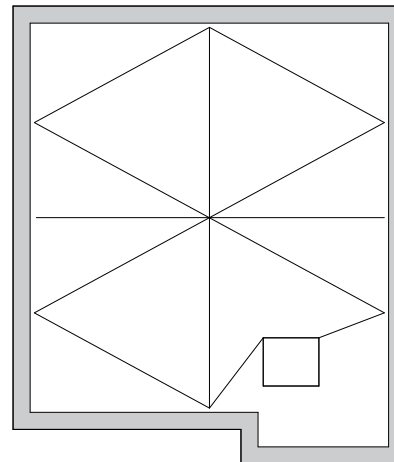
LEVEL 2



LEVEL 3



LEVEL 4



ROOF

Legend

- Maintenance & Facilities
- Merchant, Vendor, Findlay Kitchen, Community Support & Meeting Space
- Offices & Storage
- Building Support & Vertical Circulation
- Shopping App